

Maori/Pasifika Garden Site

Path connects with Maori/Pasifika tranquility garden

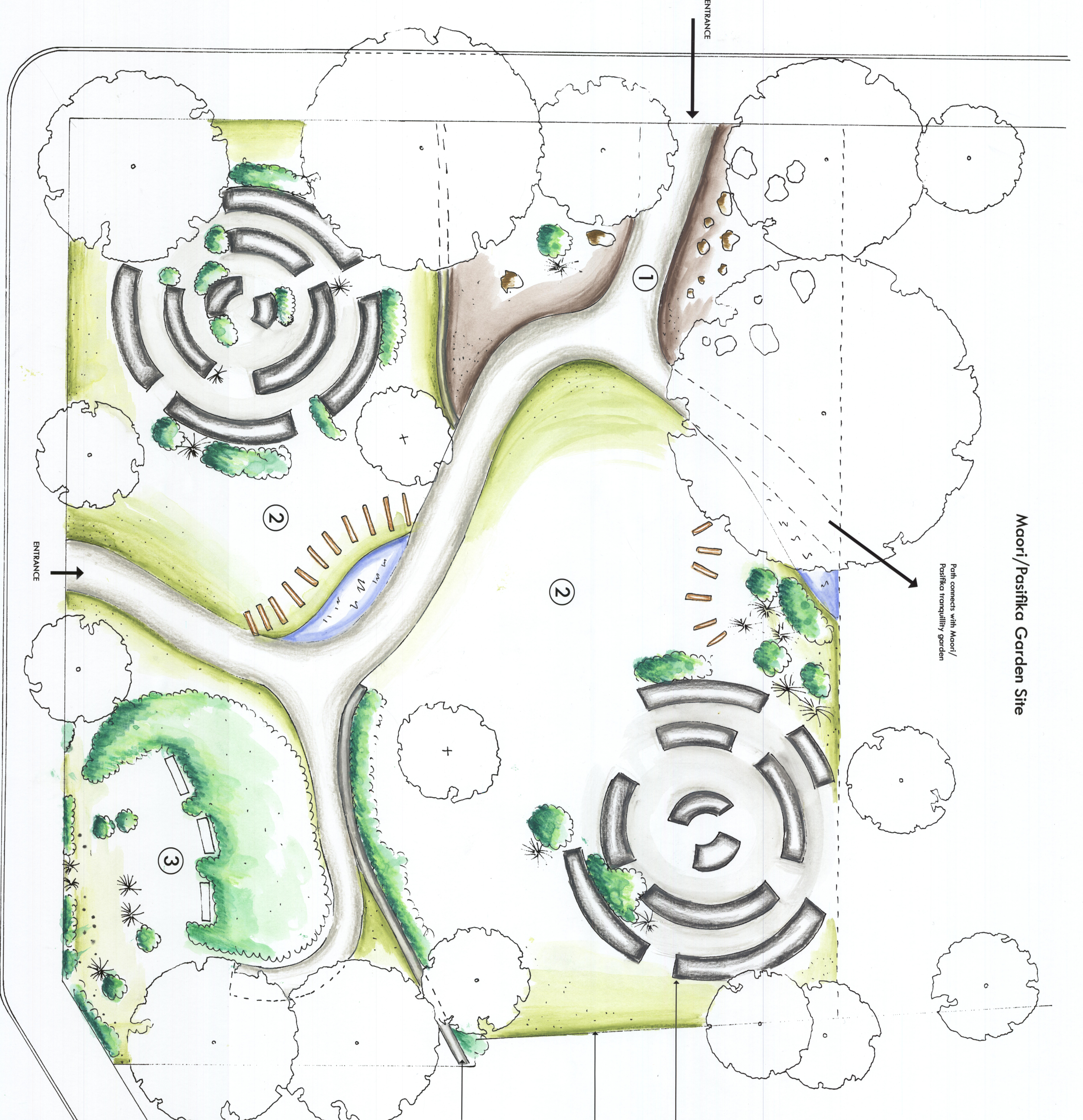
1
Transitional Area
 This is the main entrance to the site. It is an area or hub which people walk through to enter the quieter, tranquil parts of the Southeast Asian garden.

2
Calmer, Quieter Area
 This is a fairly open space with places to sit and talk with other people. It is a peaceful area for relaxing and quietly socialising. It is mainly grassed.

3
Tranquil Area
 An enclosed more secluded area for sitting. It is slightly raised to provide views across the river. There is a path to access the site but it is narrower and does not encourage throughfare

- KEY**
- Proposed trees
 - Existing trees
 - Arched Structure (Bamboo)
 - Rocks/Boulders
 - Mixed vegetation (mostly exotic)
 - Water representation
 - Gabion Wall
 - Grovel/shingle path
 - Grass
 - Bark

MANCHESTER STREET



CAMBRIDGE TERRACE