

CLIENT BRIEF:

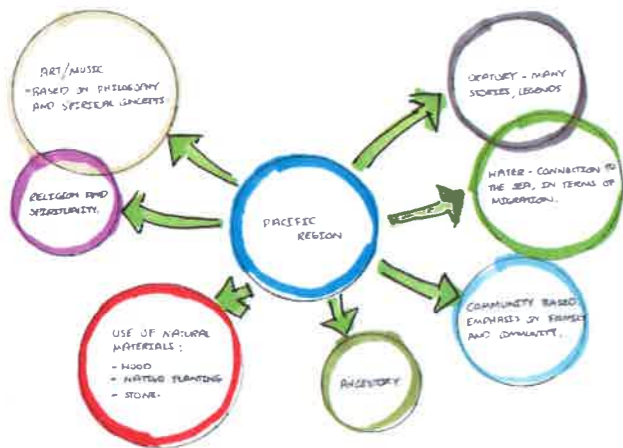
The earthquakes of 2010 and 2011 have impacted largely on the diverse communities of Christchurch. These communities, known as CALD (Culturally and Linguistically Diverse) are without support from their wider family groups, leaving them feeling isolated during this tough time of recovery.

"Healthy Christchurch", an inter-organisational initiative have developed an idea to create a design competition that aims to develop familiar and tranquil spaces for these communities. As a result of this the CALD communities should feel a sense of security and peace in these times of recovery.

Using knowledge gathered on the cultural, spiritual and philosophical beliefs of the Pacific region, a 25x20 metre garden will be developed that conveys the theme of tranquillity. The garden will have a connection to the Avon River and will also have a road frontage. The design will be a temporary landscape which will be relocated in the future to the proposed "Avon - Otakaro River Park".

BACKGROUND INFORMATION:

Below is a diagram representing the similarities seen in most cultures of the region. These cultures are divided into Polynesian, Melanesian and Micronesian. Some of these similarities have been considered and developed into tranquil aspects for the proposed design.



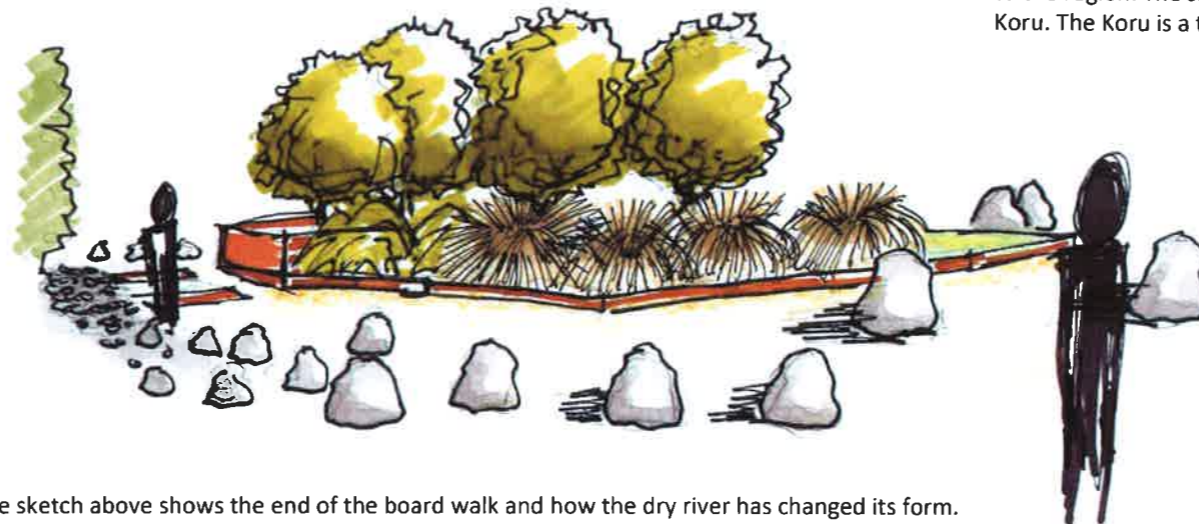
IMAGES OF INSPIRATION:



SKETCHES:



This sketch shows the space that has been developed for family or communities to reflect and feel at peace in an environment that feels familiar to them. The space is given a tranquil nature with its connection to the river and its wide open space.



The sketch above shows the end of the board walk and how the dry river has changed its form. You can also see the edge of the space that resembles the element of air, which to most cultures in the Pacific Region is the essence of life.

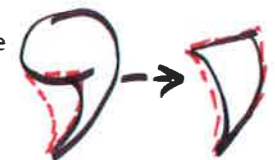
THE PACIFIC REGION

VIGNETTES:



The vignettes above show the detail of two specific aspects in the design for the Pacific Region. Both the form of seating and plant boxing are derived from tranquil aspects in the Pacific region. The seat uses natural materials known to the region, such as stone and wood. These materials have been used to create a gabian basket. Giving a familiar feeling for members of the region. The vignette on the right shows the central planter box in the design. This has also been made from wood, natural to the region. The shape was derived from the negative form found in the Maori Koru. The Koru is a tranquil form of life to this culture, so it was used as inspiration.

Abstraction of the negative shape found in the Koru.



The sketch above shows the tranquil board walk through the design. The walk emphasises the tranquil nature of water in the abstract form of a dry river.

DESIGN INTENT:

To create a design that portrays the tranquil qualities of the Pacific region, using inspiration from certain cultures. The design will be based around significant features of the Pacific region's culture, spiritual and philosophical beliefs. These significant features include the importance of community and family and the meaning and philosophy behind water and air. These features will be abstracted and incorporated into a design that creates a familiar and tranquil mood.

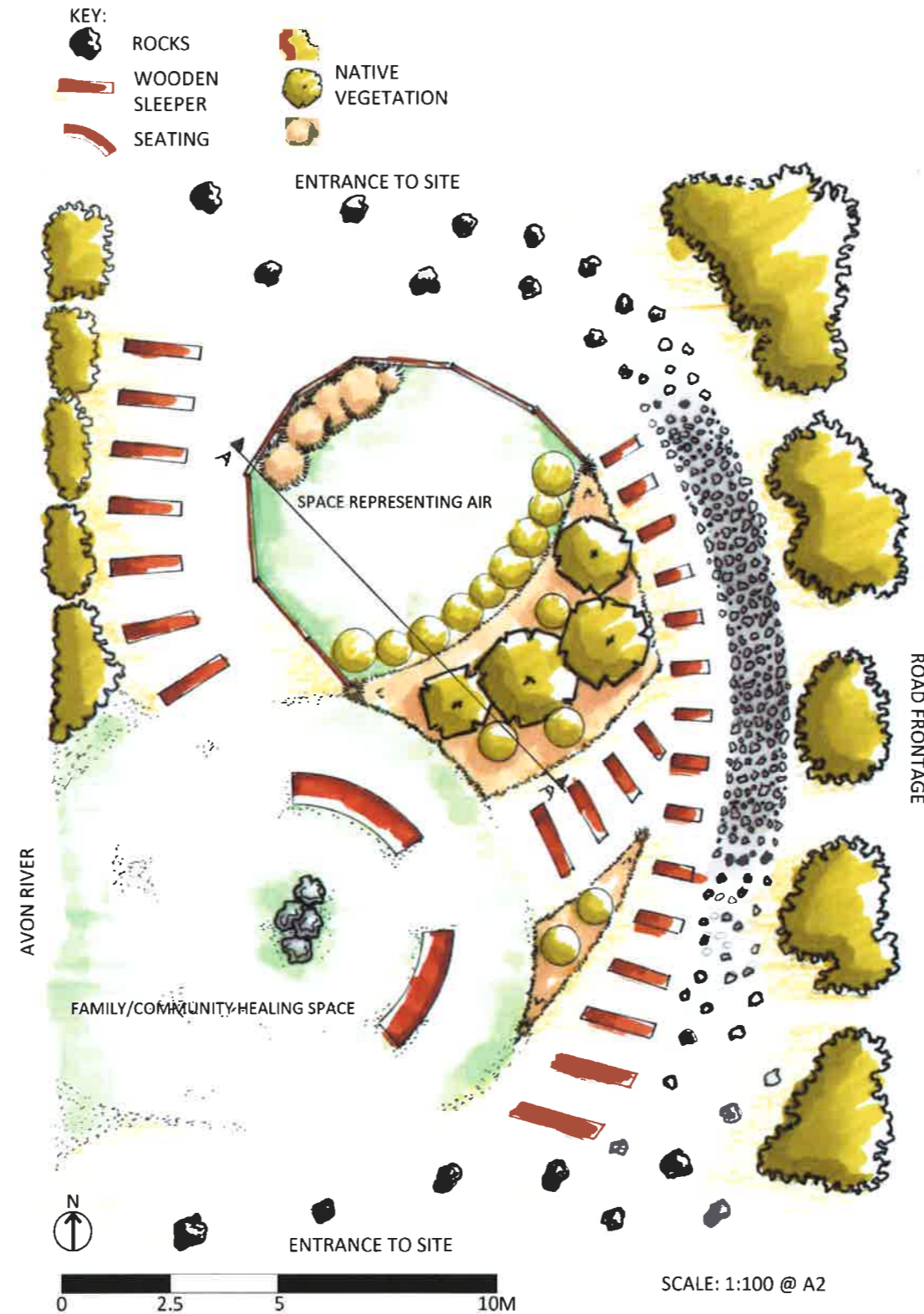
AIR

The essence of life through air is captured in the design through the dedication of an individual space that is open and exposed. To emphasise the element the space has been raised to increase its level of exposure. As well as this, native flax have been planted to produce soft sounds in the wind and give the air a more obvious and noticeable form. These familiar aspects are developed in a manner that represents a tranquil mood through the suggested use of natural materials, such as macrocarpa for the retaining wall and native flax as a border. The open space also gives a tranquil feeling through reducing the uncomfortable feeling of enclosure. It is crucial that an open space is made available when creating a tranquil garden.

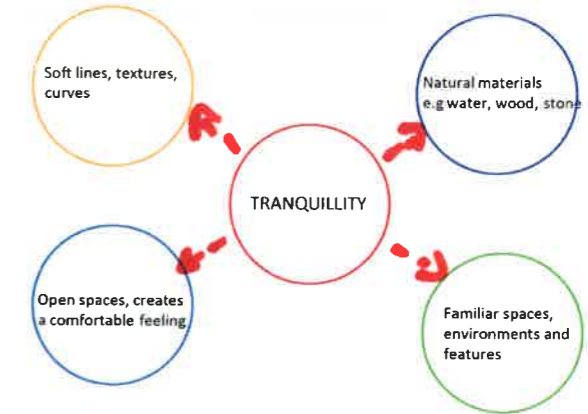
FAMILY AND COMMUNITY

In terms of family and community, a space has also been dedicated solely for this purpose. The area is secluded from the space that represents air and is on a lower level, surrounded by vegetation, giving a sense of privacy, which also emphasises a tranquil, undisrupted mood. The space has also been connected to the tranquil element of water through being exposed to the river that runs directly alongside it. Water, to some cultures in the Pacific region is seen as the source of life and a tool for healing. Allowing this connection gives a tranquil feeling to the space and allows it to be used as an area for family and community healing. The tranquil mood is further emphasised through the use of native planting and natural materials. This gives the sense of familiarity.

POTENTIAL MATERIALS PALETTE

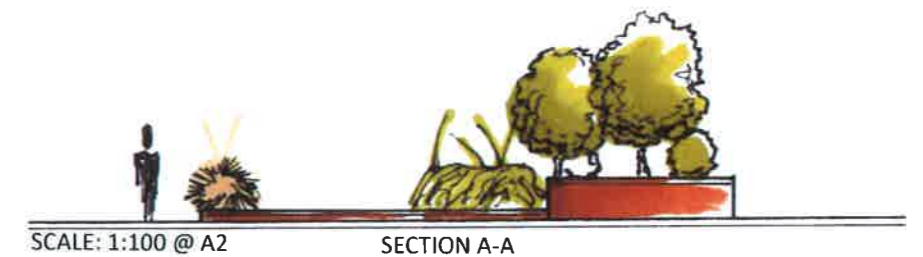


Tranquillity diagram, shows the most common views as to what tranquillity is. This bubble diagram allowed similar approaches to be taken into consideration in the tranquil garden design for the Pacific region.



SECTION ELEVATION

Section elevation showing the different levels between the space representing air, the native planting box and the ground plane. The native planter box is derived from the negative shape found in the Koru, giving a sense of meaning to tranquillity.



WATER

Many cultures in the Pacific region are very oratory. Their past experiences hold many legends and stories. To incorporate the element of water a story has been told on the right hand side of the site. Natural rocks have been used to create a dry river which represents water. Water is a very tranquil element in any culture, but it is very significant to the Maori, one of the Pacific region's cultures, in terms of life. Life is a progression of growth and can represent a great deal of change. The idea of change is crucial for Christchurch as the city under goes its process of recovery. Therefore a story is told about change through the use of water. The story takes place along the natural board walk where the land begins to develop into a river through the gathering of rocks (representing water). As you walk across materials natural to the region the rocks begin to separate again, changing into another new form. This represents and explains the story of life and change. The story is placed in a tranquil environment surrounded by natural materials and the sheltering of native planting.

Suggested materials include: Rocks, grass, timber (recycled), native planting and limestone chip. All materials aid in the emphasis of tranquillity and are natural to the Pacific region.