

# South and East Asia



Site Sketch

## Design Programme

The design is based on the concept of **three**. The design is divided into three sections. Three is also represented by the *Acer triflorum*, the maple native to Southeast Asia, used in the design. The planting is arranged in multiples of three.

The site is created on a **human scale**; nothing too large to alienate the people.

Bamboo fences separating the three areas represent the mountains, as a secure backdrop. The bamboo is arranged differently in each row; the first tall and dense, the second slightly open, the third low and sporadic. This creates the permeation of light through the quieter areas, with glints of the view of the river from the mid-section.

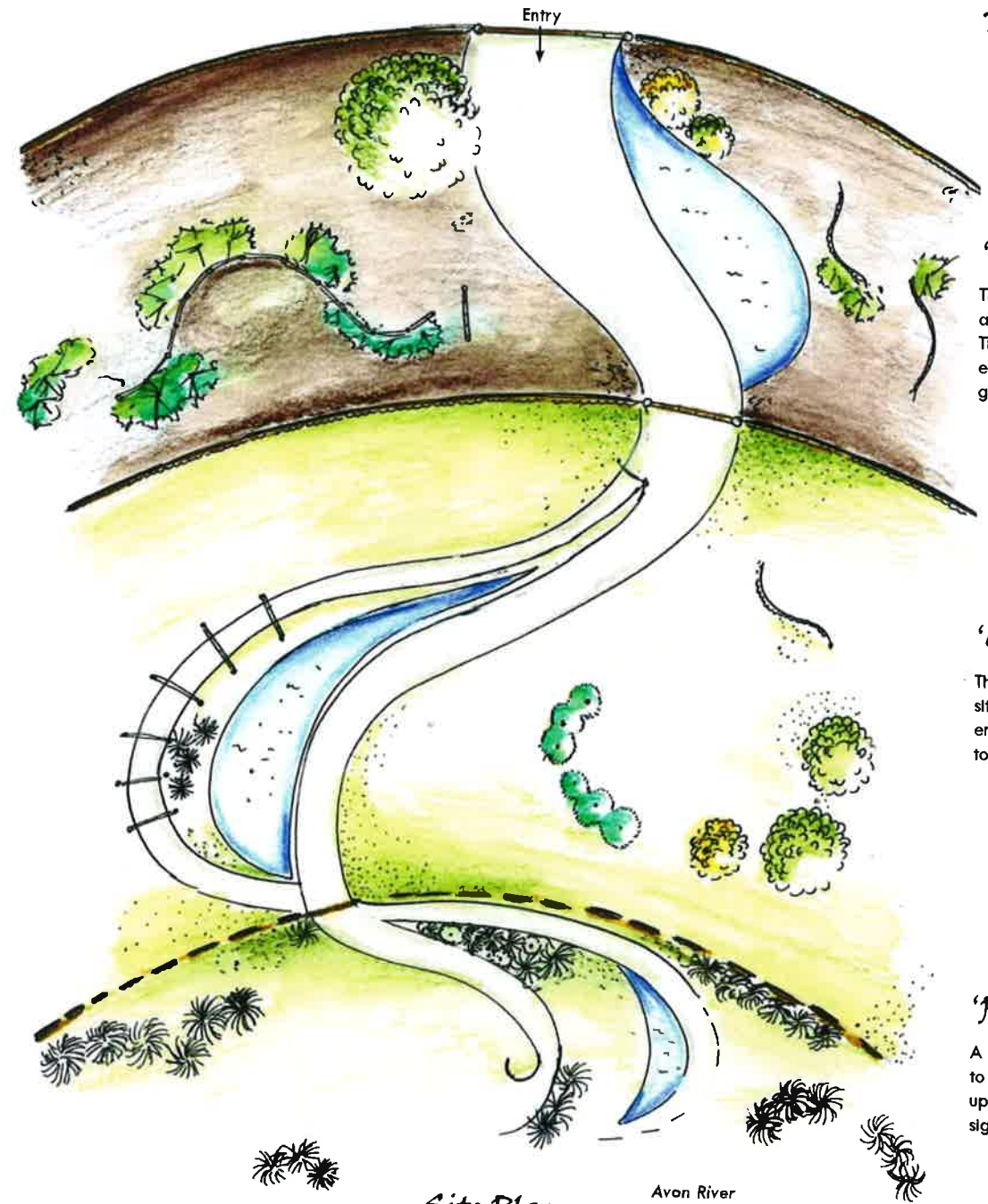
**Flow** is represented in the **curve** of the path, the movement of people along it representing the flow of the river from the mountains. The gentle curves enhance the feeling of **tranquillity**.

**Soft** textures are found in the grasses used (*Fescue*), particularly in the 'peaceful' area.

The site is sparsely 'embroidered' with plants and trees, and the bricks which line the water pools, creating subtle decoration or 'embroidery' of the site.

The design is relatively flat with a small incline from the entrance towards the river.

The site uses **sustainable** and recycled materials where possible.



The Three Areas

## 'Transition'

The entrance to the site is wide and the depth of the area shallow. This represents a 'busier' space, and encourages transition through the garden.

## 'Calmer, quiet'

The user moves into this open quieter site. It is peaceful and open and encourages small gatherings for people to sit together and relax.

## 'Peaceful'

A quiet reflective area for individuals to sit and contemplate whilst looking upon the river. This is of particular significance in Korea.



Bamboo Walkway



Water Pool

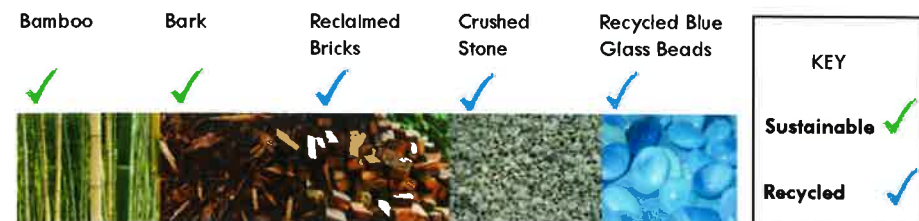


Three-tree section



Bamboo entrance to the site

## Materials



Sketch showing ground profile of design

Site Plan



Scale 1:100 @ A2



Carolyn Ramsbottom 1100753  
 Student of Landscape Architecture  
 Lincoln University, Christchurch  
 Tel: 021 069 3306  
 Email: carolyn.ramsbottom@lincolnuni.ac.nz

# The Design: 1:100 Plan and Sketches

## "Places of Tranquillity"



Healthy Christchurch





# South and East Asia

## The Brief

The design aim is to create a "Place of Tranquillity", based on the cultural, philosophical and spiritual beliefs of the region of Southeast Asia, and to provide a place for reflection, peace, familiarity and tranquillity for the CaLD (Culturally and Linguistically Diverse) communities who live here in Christchurch.

The design will be located on a temporary site and will use recycled and/or sustainable materials as much as possible, particularly the materials which have come from the rubble from the Christchurch earthquakes.

## The Background

Southeast Asia is a hugely diverse community, yet there are commonalities which link the region, in language, music, art, food, and religion to name but a few.

Tranquillity in the Southeast Asian community has a strong natural influence. Being at one with nature, the flow of water, the spirits of the mountains are all important.

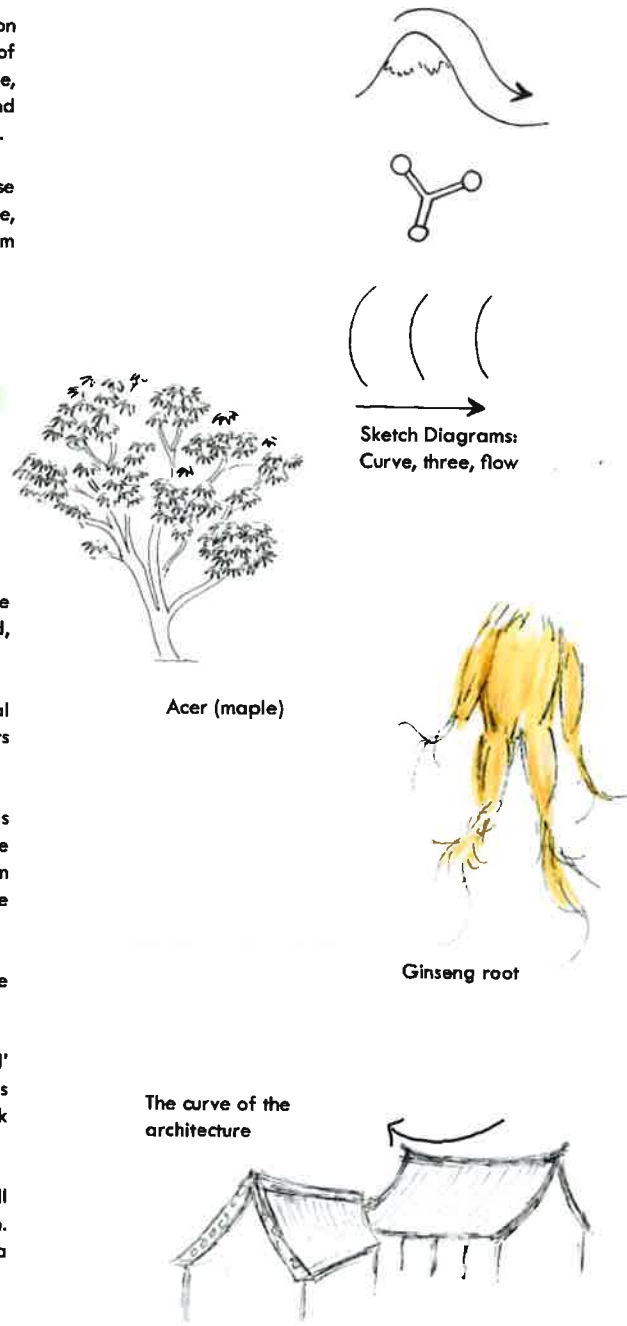
The number 'three' is a key number derived from many areas in the culture. For example the three elements of Buddha, the three tripitaka, the three Kingdoms of Korea, the Acer triflorum (three-flowered maple). There are many more examples of the occurrence of 'three' in the region.

With regard to open spaces, it is a belief in many areas of the region that these spaces should be 'simple' and 'unforced'.

The architecture of Southeast Asia features the distinctive 'curved' roof. Architecture and Nature are blended, and in harmony. This means structures tend to sit in amongst the trees and not 'stick out'. Harmony in the landscape is crucial.

Ginseng is a plant which is prevalent in Southeast Asia. It is well known for its medicinal properties and is grown across the region. It is interesting that the root itself resembles the human form as a hybrid of plant and man.

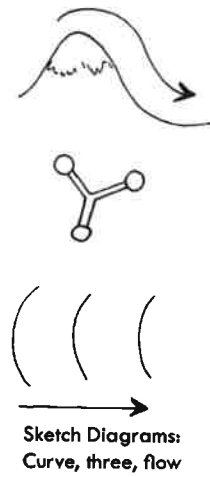
## Inspiration



Acer (maple)

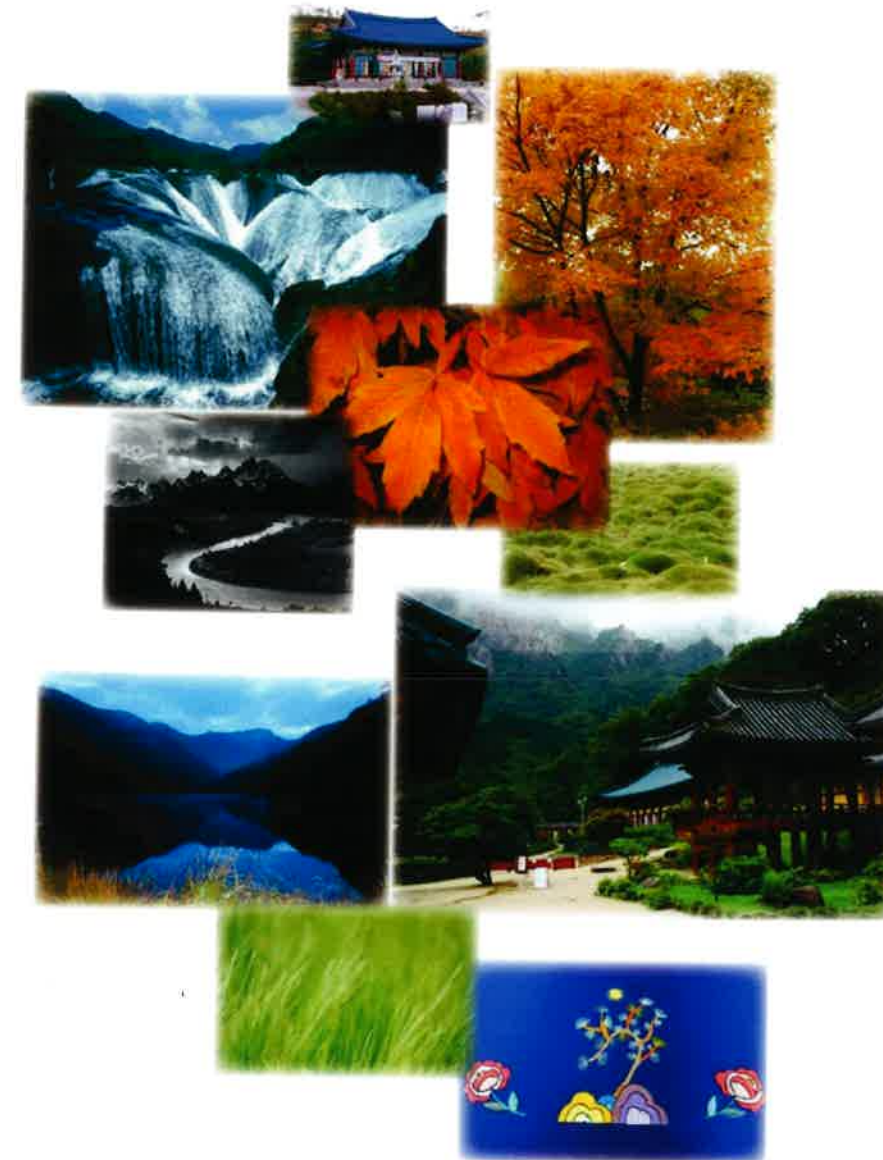
Ginseng root

The curve of the architecture



Sketch Diagrams:  
Curve, three, flow

Rustling leaves  
Curves  
Seclusion  
Flowing Water  
Vistas  
Flow  
Three  
Water  
Mountains  
Ginseng root  
Nature  
Tranquillity  
Peace  
Safety  
Morning calm  
Asymmetry  
Embroidered  
Human Scale  
Quiet  
At one with nature  
Escape



## Design Intent

"To create a tranquil space, using elements derived from Southeast Asia. Familiar to the region, welcome to all"



Carolyn Ramsbottom 1100753  
Student of Landscape Architecture  
Lincoln University, Christchurch  
Tel: 021 069 3306  
Email: carolyn.ramsbottom@lincolnuni.ac.nz

# Background and Research

## "Places of Tranquillity"

Healthy Christchurch

