



## BRIEF

To design a relocatable garden which is a space of tranquility and respite.

- 500m<sup>2</sup> garden space
- a connection required with the Avon River and one road frontage provide relief from constant challenge of living in post-earthquake Christchurch
- to be designed with a south-east Asian theme, drawing inspiration from Korea specifically
- be inclusive to people from any culture or background
- needs to be temporary and relocatable
- materials should be related to sustainability- recycled or reclaimed if possible

Nature and vegetative form are forefront in this design in order to reinforce the idea of 'contemplative beauty,' the peace that we can find in our respect of nature

## WATER

- Very important element in southeast Asian landscapes
- Sound of running water is highly relaxing
- The relationship with the river connect the site with the contextual Christchurch
- Mind clearing and calming qualities to most

## DESIGN INTENT

I intend to create a space which caters for the needs of different groups, including places for socialising in larger groups, more private spaces for groups of 1-3, as well as a main tranquility space meant for relaxation and tranquility. All in all, this is a place for community. Through the use of highly abstracted symbolism and materiality, this space is to remain inclusive for anyone. This space should be modern and uncluttered, yet subtly reflect elements of the southeast Asian culture and landscape, drawing inspiration from Korea specifically. The space should be one of 'contemplative beauty,' one in which is visually interesting and pleasing, yet simple enough to be tranquil with the sound of running water reaching all parts of the site. I also wish to explore the principles of Buddhist meditation as this is one form of tranquility I am mostly familiar with. In this, I wish to explore the idea of breathing, of reflection, of inner resiliency and effectively finding peace within the chaos of the situation in Christchurch.

In order to gain an insight into the Korean culture, I looked into art forms and specifically the beautiful Korean paintings of the past. These gave me an overall theme to go from, one of admiration and respect of the nature around us, one of which to highlight in this design as an artform in itself; a peaceful environment. Also giving hints as to the overall theme was traditional Korean music as well as memories and sketches from travels in Indonesia, Malaysia.

## CONNECTION WITH NATURE

- Is highly interconnected with many religious beliefs of the region
- Exemplified in Korean landscape paintings, a feeling of oneness with nature
- Often as with most cultures, nature is a way of experiencing a deeper spirituality and hence a kind of meditational tranquility
- Korea throughout history has a very unique relationship with their landscape, in the acceptance of nature as dominant and humbling. This is paralleled in Christchurch with the acceptance of earthquakes and the power of nature.

## FORM & MATERIALITY

- Inspiration of the form in the garden comes from the architecture and plant forms of southeast Asia
- Highly natural and earthy materials are important so as to be at one with the natural environment
- Vegetation native to the southeast Asian region is key to creating a place familiar to that region yet inclusive to all people



View from front entrance along path. Different seating areas and spaces can be seen, with main tranquility space at end of path. Moving water board throughout entire site.



View into tranquility space from end of path. Rose of Sharon is focal point in running water.

# southeast asian garden of contemplative beauty



"Our greatest glory is not in never falling but in rising every time we fall"

Confucius

The design is based on a human scale, reestablishing the idea of being at one with nature and immersion within it, rather than attempting to dominate it. The idea of acceptance resonates within this, an important skill important in dealing with the events over the last years, and being humbled by natural forces.

Materials are basic and hence easily adaptable based on what is available for reclamation. Design has been kept basic in order to ensure it is relocatable and materials are easily found. Sustainability is paramount, and hence it is intended that new materials are limited and recycling and reclaiming building materials left after the earthquake be made use of in innovative ways.



Placement of boulder stones for seating encourage people to sit by themselves and reflect with the sound of rushing water resonating through the area.



A confined space for those wanting privacy or themselves or with another.



SECTION AA 1:100

Visitor moves through spaces to finally enter space of reflection and tranquility. Elements are kept on human scale, visitor is immersed yet humbled by falling water and strength and verticality of bamboo form. Bamboo-inspired screens create privacy and refine spaces. Change in spatiality represents the mind's journey to tranquility and meditation.

Access may only be gained through front access from road, so as to promote feelings of safety. In a temporary CBD location, river would be located to the north as an extension of the vertical axis of the site. A path that leads between the sites would be ideal however not required.

Bamboo/pine borders the entire site in order to create an escape from the slowly recovering city around, as well as making it inaccessible at night after gate is locked.

Picnic tables and other seating arrangements provide spaces for different groups with different needs.

Shallow pools of water provide calm in the space, and have opportunities for plant life such as water lilies and lotus plants.

From entrance, spaces begin as open and then become more confined until you reach the main tranquility garden with expansive openness and complete surround.

Plant species specific to southeast Asia create familiarity through their form and colour. Included in these are deciduous plants in order to experience rhythm of nature within the site.

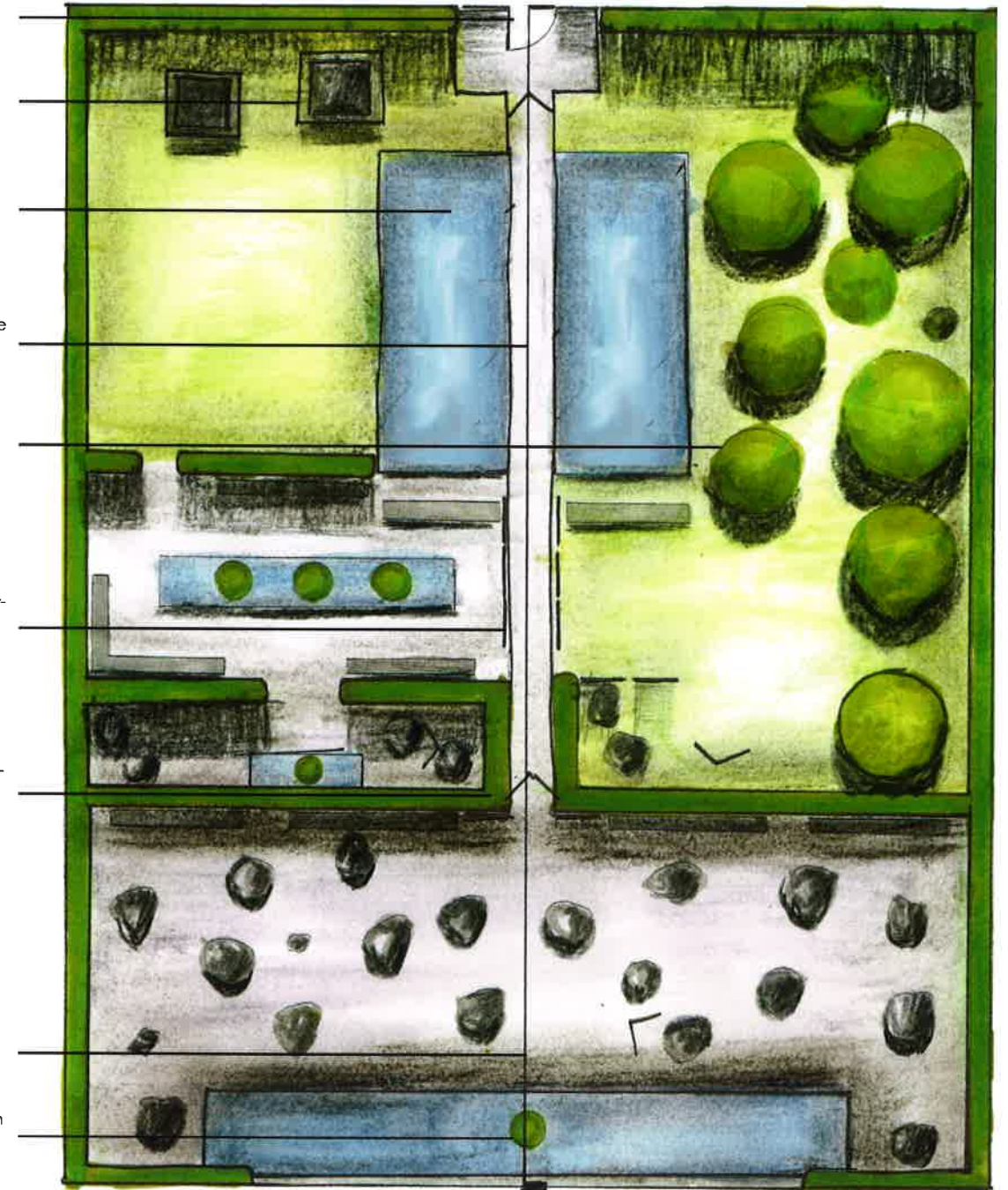
Basic bamboo-inspired screens provide privacy and refinement of spaces. Easily constructed and can be made out of a wide range of reclaimed materials. Bamboo is highly symbolic as a protective and strong material, important in a garden for a post-earthquake environment.

Highly angled forms are familiar to the landscape and built forms of southeast Asia. Modern and simple structures are easily built and uncluttered to the eye.

Plaque at entrance and at final point at base of water reads Confucius quote above, relevant to Christchurch today, to Korea in its strength to stand trial throughout history, and in the battles within self, reiterating the idea of resiliency.

Wall with water running down supplying tranquil noise throughout the site. Amidst the rush of water is Rose of Sharon, a symbol of resilience, contrasting with the wall behind. A space of peace and reflection.

RIVER TO NORTH  
ROAD



20 x 25m



Please note, this design is suitable to the temporary city location. Slight changes would be made if relocated to a site in the Avon-Otakaro Park so as to suit this different context.

# southeast asian garden of contemplative beauty