

# BACKGROUND INFORMATION

## Climate:

European countries and Russia have a wide variety of landscape environment and cultures. The peninsula of Europe's geographical shape makes the climate in Europe very temperate, maritime but remains to have a distinct wet and dry season due to its prevailing winds. While Russia has a predominant mountain ranges which restrict the moderate temperatures from reaching the continental regions.

## European in Christchurch:

Christchurch is a colonial city by the European. The early European settlement in Christchurch was in the early 19th century. 75% of people residing in Christchurch belong to "Europe" ethnic group.

## Religion:

In Northern Europe, Lutheranism is prominent religion. In Central and Southern Europe, Roman Catholicism dominates. While in Eastern Europe, Eastern Orthodoxy is the main religion. In Russia, the Russian Orthodoxy is the main religion. But among these religions, they all believe in Jesus and have the same God. Therefore, most of the architecture and garden forms are all strongly influenced by their religion. Gothic Architectures were flourishing in the medieval period and succeeded by Renaissances Architectures.

## The Client:

Christchurch has a range of Culturally and Linguistically Diverse (CaLD) communities, many of whom have suffered through the earthquake event of the last 18 months without the support of their wider family groups – leaving them feeling isolated in a strange land. This site is designed for people with Europe & Russia background, for example people from Poland.



## Garden Form:

Looking back to the transformation of garden form, European and Russian Garden designs are strongly influenced by the paradise garden form—"the Garden of Eden". The paradise garden form is symmetrical form with a central focal point. Water feature is an important element in the garden, representing the start of life and for the irrigation of the garden. The enclosure form gives people a sense of protection, calmness and tranquility

## Poland:

Poland is located in the central Europe. Most of the continent is plain, but there are mountains in the north area. Poland had suffered a lot during the World War II. Many Jewish were killed in that time. Therefore, Poland has mixed ethnic: Polish (96.7%), German, Belarusian, Ukrainian and other ethnics in present day. The dominant religion in Poland is Roman Catholic which strongly influencing the Polish's architecture, design form, art, music, and many other things. Maria Sklodowska-Curie and Fryderyk Franksizek Chopin are the most famous scientist and musician from Poland. Besides, the family plays a significant role in Poland and is the centre of the social structure.



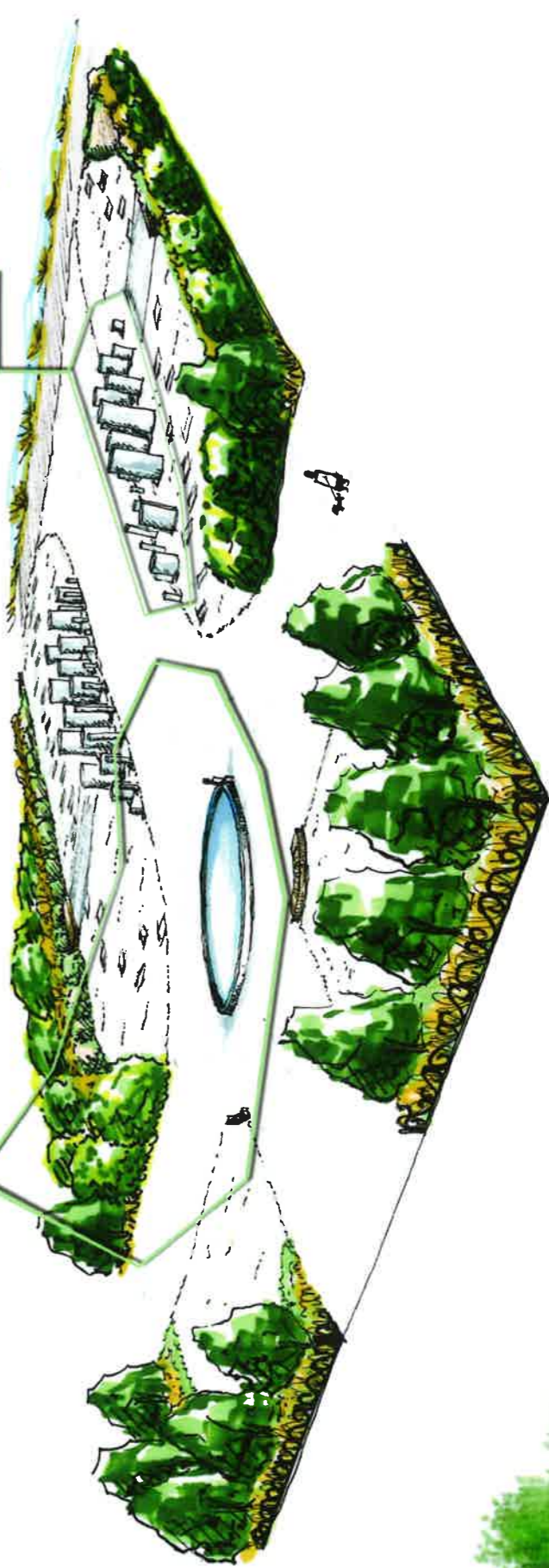
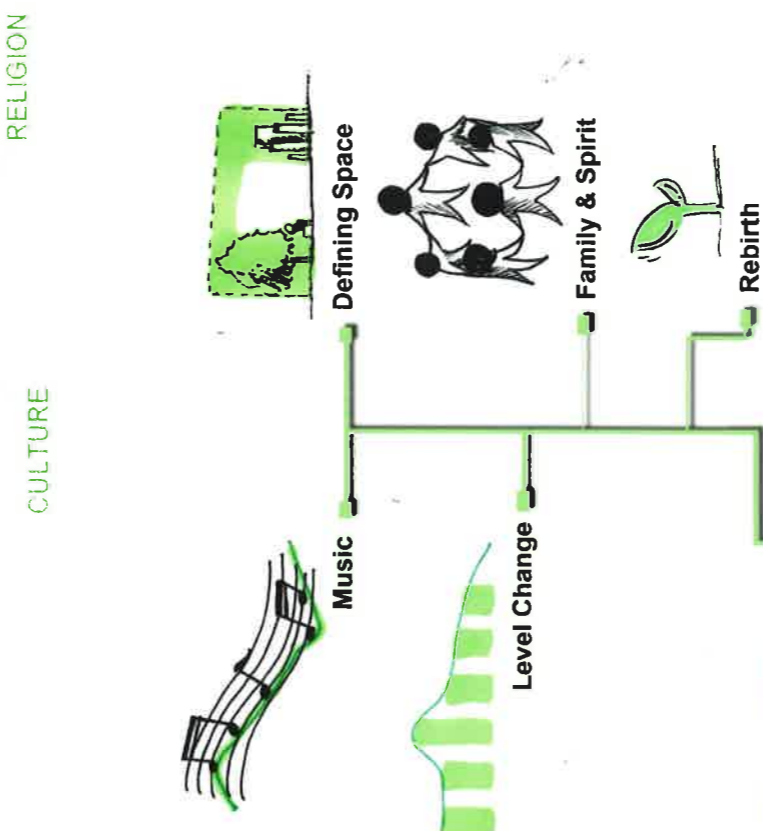
Cross Form Circulator



Symmetrical Patten Fence



Symmetrical Garden



# PLACES OF TRANQUILITY

Europe & Russia

LASC 215 CaLD Community Competition

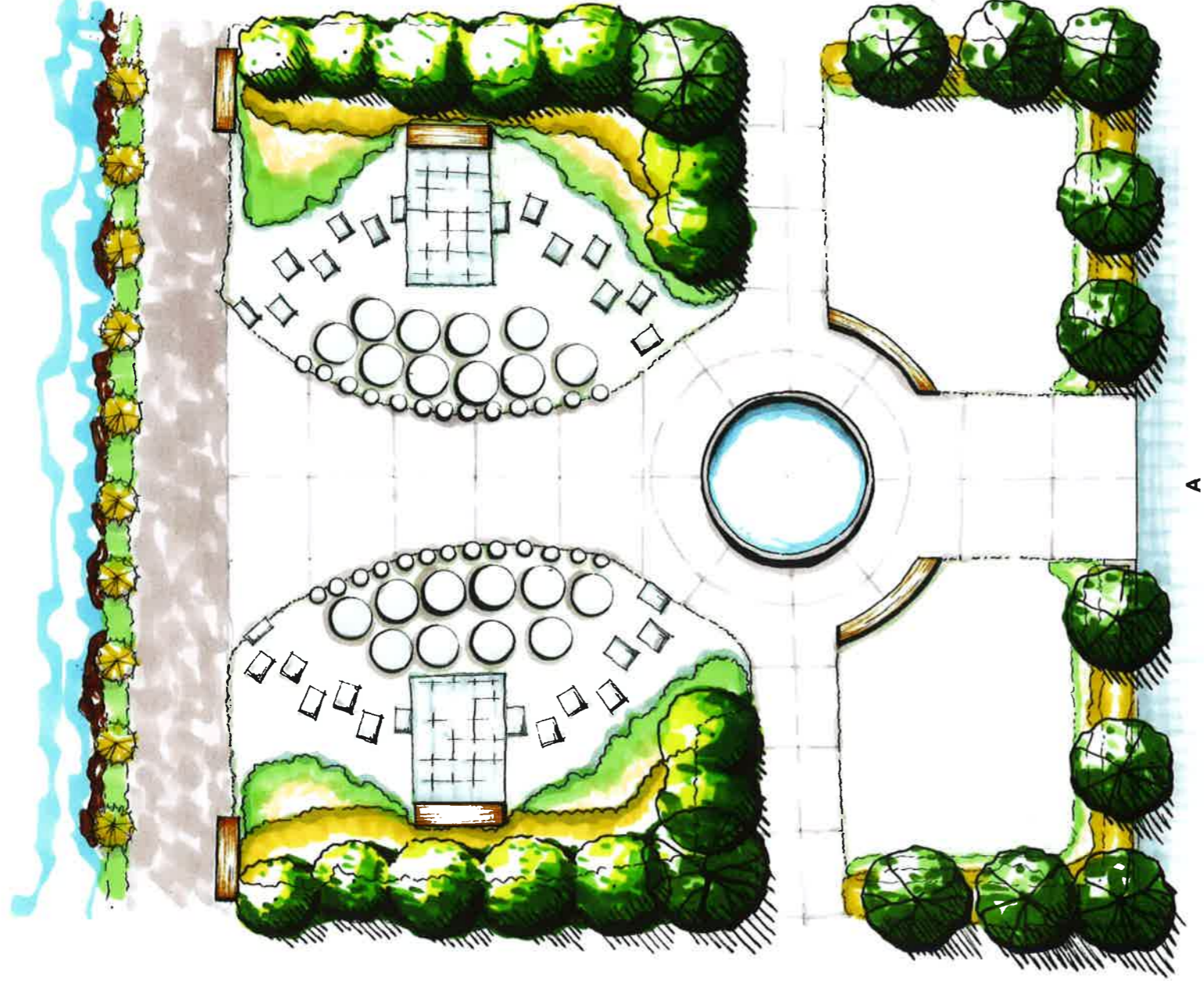
Roxane. Deng

ID 1093128

E-mail: qiao.deng@lincolnuni.ac.nz



# SITE PLAN



FRONT VIEW



PRIVATE SPACE



OPEN PUBLIC SPACE

# MATERIAL



White poles are made of the recycle tubes.



Benches are made of wooden box, easy construct and moveable.



Concrete Ground  
New Zealand local material



Lemonwood  
New Zealand native plant which provide protection, fragrant. Smooth leaf surface gives a sense of tranquility.

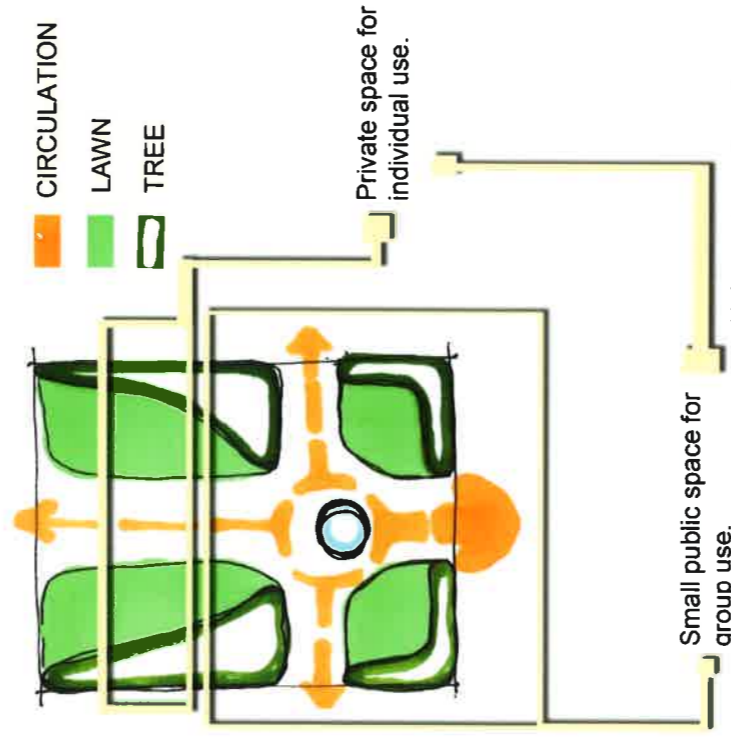


Sedge  
New Zealand native shrubs

## Design Statement

This site design is aiming to provide people an experience of tranquility and familiarity. The 21 x 24m garden is designed in classical symmetrical form which is inspired by the symmetrical European garden. Dimensions of the garden and the water fountain locations are calculated in the Golden Rectangle and Golden Ratio way. It is believed that the Golden Rectangle and Golden Ratio can find the most suitable form for people's visual image, and provide them the sense of harmony and peace inside. Symmetrical form give people with European background sense of familiarity. The whole garden is divided into semi-open public space nearing the road, and private space near the river. Plantings are native plants.

- CIRCULATION
- LAWN
- TREE

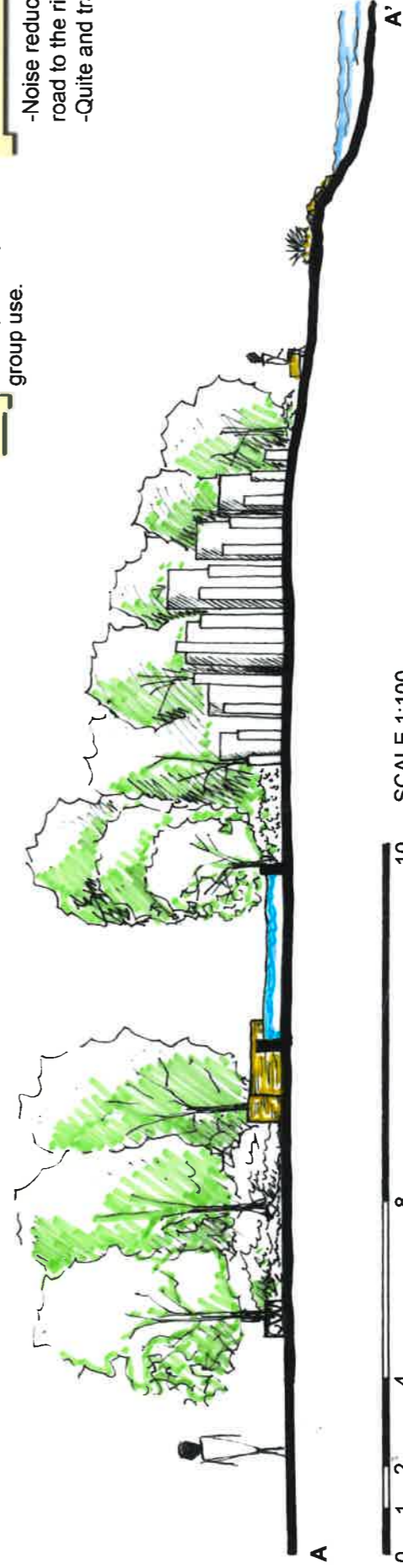


Small public space for group use.

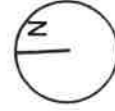
Private space for individual use.

-Noise reduces from the road to the river.

-Quite and tranquil



SCALE 1:100



# PLACES OF TRANQUILLITY

Europe & Russia

LASC 215 CaLD Community Competition

Roxane. Deng  
ID 1093128

E-mail: qiao.deng@lincolnuni.ac.nz